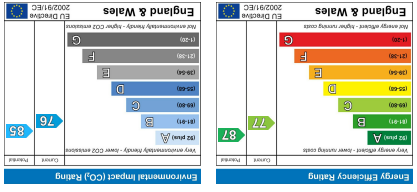
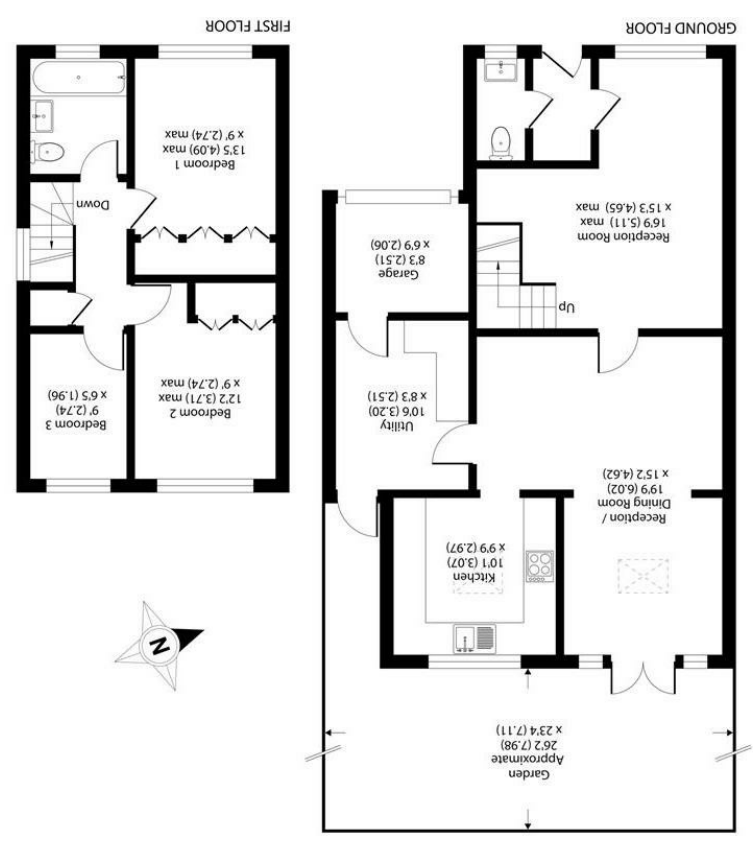


All appliances listed in these details are only 'as seen' and have not been tested by Gibson Lane, nor have we sought certification of warranty or service, unless otherwise stated. Measurements, areas and distances are approximate. Floor plans and photographs are for guidance purposes only and must not be relied upon for any purpose. These details are offered on the understanding that all negotiations are made through this company. Neither these particulars, nor verbal representations, form part of any offer or contract, and their accuracy cannot be guaranteed.



RICS Certified Property Measurement  
 Floor plan produced in accordance with RICS Property Measurement Standards incorporating International Project Measurement Standards (IPMS2 Residential) © RICS 2020



Approximate Area = 1107 sq ft / 102.8 sq m  
 Garage = 56 sq ft / 5.2 sq m  
 Total = 1163 sq ft / 108 sq m  
 For identification only - Not to scale

34 Richmond Road  
 Kingston upon Thames  
 Surrey  
 KT2 5ED  
 www.gibsonlane.co.uk  
 Tel: 020 8546 5444



Hardings Close  
 Kingston Upon Thames KT2 6DR



## Hardings Close

Kingston Upon Thames KT2 6DR

Asking Price £840,000

An attractive link-detached family home situated in this sought after North Kingston close.

### Description

A spacious link-detached modern family home benefiting from a full width ground floor extension, situated in this popular North Kingston close. Internally the house has been subject to a complete modernisation programme and now presents a stunning interior offering a practical contemporary style of living. The property is immaculately presented and features well balanced accommodation comprising of a wonderful front reception room, utility room, downstairs WC and an impressive open plan kitchen/dining/family room with patio doors leading directly onto an attractive south facing rear garden. To the upper floor there are three bedrooms and a family bathroom. Externally there is off street parking to the front and half a garage for essential storage!

### Situation

Hardings Close is a residential development of just six detached houses set amongst landscaped grounds conveniently situated for Kingston town centre with its wealth of shops, bars and restaurants and moments from the overground station offering its direct service into Waterloo. Both Richmond Park and Canbury Gardens with the River Thames offering their many acres of open space are close by. The standard of schooling in the immediate area is excellent within both the private and state sector.

**Tenure:** Freehold  
**Local Authority:**

